

# NEWSLETTER

WEEK 8 TERM 2

ISSUE 44

2023



KEITHCOT FARM PRIMARY SCHOOL

5 Keithcot Farm Drive, Wynn Vale

Phone: 8289 1133

Website: keithcotps.sa.edu.au

Respectful  
Collaborative  
Powerful Learners

## FROM THE PRINCIPAL

### When we know better, we do better!

We are changing the way that we are teaching reading at KFPS and this is a year of transition.

We now know a great deal about how the brain develops as we learn to read and what instructional practices are most effective for all children. We are committed to stop doing what doesn't work and be guided by scientific research to ensure that we deliver on the promise of literacy for every student.

Students will be assessed regularly for phonological awareness, knowledge of the phonics code and fluency using Dibels (Dynamic Indicators of Basic Early Literacy Skills).

Each student's achievement and progress will be monitored F-6.

The ultimate goal of all reading instruction is for students to understand what they read. The model of The Simple View of Reading demonstrates that reading comprehension occurs only when students have both Decoding/Word Recognition Skills and Language Comprehension skills.



Again, it's an exciting time to be in education and we need you as our partners! Keep reading those bedtime stories with expression and passion and feel very proud of the love of reading you are passing on to them.

*Carol Farnworth*



### IN THIS ISSUE

- Page 1** - From the Principal
- Page 2** - In the garden with House 1
- Page 3** - Japanese Quiz Day
- Page 4** - Science with Pod 3 & P2AB
- Page 5** - Reconciliation Week
- Page 6** - Reading Strategies with P2AB
- Page 7** - Reading Adds Up
- Page 8** - 2nd hand uniform Pop Up Shop/ Emergency lunches / Fundraising News
- Page 9** - Retaining Walls / Clubs / ASD Lead Teacher
- Page 10** - Premiers Be Active and Reading Challenge / Children's University
- Page 11** - Daily Schedule / Enrolments and School Tours info / Rory's School Lunches / Volunteering / Attendance Matters / First Aid
- Page 12** - Community News Page
- Page 13** - Important Dates / Pupil Free Days / Facebook page info / OSHC info / School Locker info / Absentee info

**RESPECTFUL**

**COLLABORATIVE**

**POWERFUL LEARNERS**

# In the Garden with Amy & House 1



House 1 love it when Artie's Mum Amy comes to help them in the garden. They have spent time clearing the old garden beds and planting new vegetables. Thanks a bunch Amy!



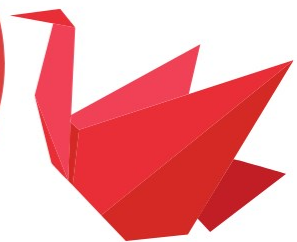
J  
A  
P  
A  
N  
E  
S  
E

# QUIZ DAY 2023

Japanese Quiz Day 15th June, 2023.  
90 students participated in the Annual Year 5/6 Japanese Quiz Day at Education Department Training Centre in Hindmarsh. 8 of our students (Charlotte B, Claire D, Amber N, Lily H, Will D, Owen S, Noah and Ben T) were put in teams with students from other schools. The competition involves students testing their knowledge on Japanese culture, geography, history and much more. Two students from Keithcot Farm Primary School (Ben and Noah T) were part of the winning team.

Both public and private school students participate in the event which is run by the Japanese Language Teachers Association of South Australia.

Wallace Sensei  
Japanese Teacher



# Science



CRIME SCENE CRIME SCENE CRIME SCENE CRIME SCENE CRIME SCENE



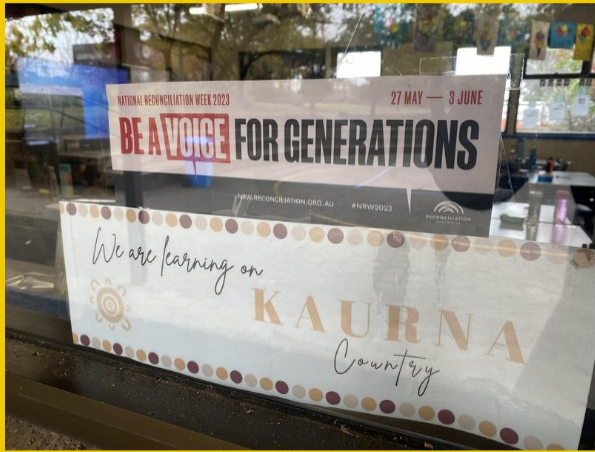
Pod 3 had their Forensic Science incursion . From all the feedback it was very informative and lots of fun.



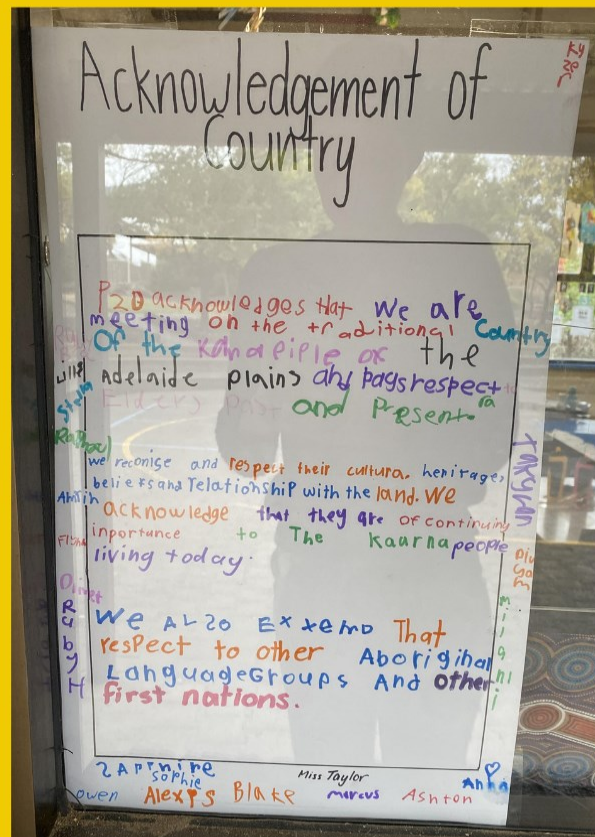
Earlier this term Pod 2AB created their own galaxy in Science. They learnt that humans have only identified 4% of space.



# National Reconciliation Week



Across the whole school we recognised National Reconciliation Week (27th May - 3rd June). This week is a special time for all Australians to learn about our shared histories, cultures, and achievements, and to explore how each of us can contribute to achieving reconciliation in Australia. P1D and P2D did some wonderful artwork as part of their learning. P1B made some beautiful wild desert roses for their window display to pay respect to the Stolen Generation on National Sorry Day.



# P2AB

# Reading

## STRATEGIES



Reading Strategy: Repair Bear - this strategy is about self correcting as we read. Read the word, does it make sense? If not, try again.



Reading Strategy: Flippy Dolphin - this strategy is about trying to find the long and short vowel sounds when we are stuck on a word.



# READING ADDS UP!

Let's continue to cultivate our love and habit of reading to develop our knowledge and imagination.

## READING ADDS UP!

### WHAT A DIFFERENCE READING FOR 10 MINUTES A DAY MAKES...

A student who reads for 10 minutes every day typically has a broader range of vocabulary and an increased level of spelling. Reading exposes children to new ideas, facts, and cultures, helping to expand their knowledge and understanding of the world around them. Not only does regular reading help make students smarter, it can actually increase brain power.



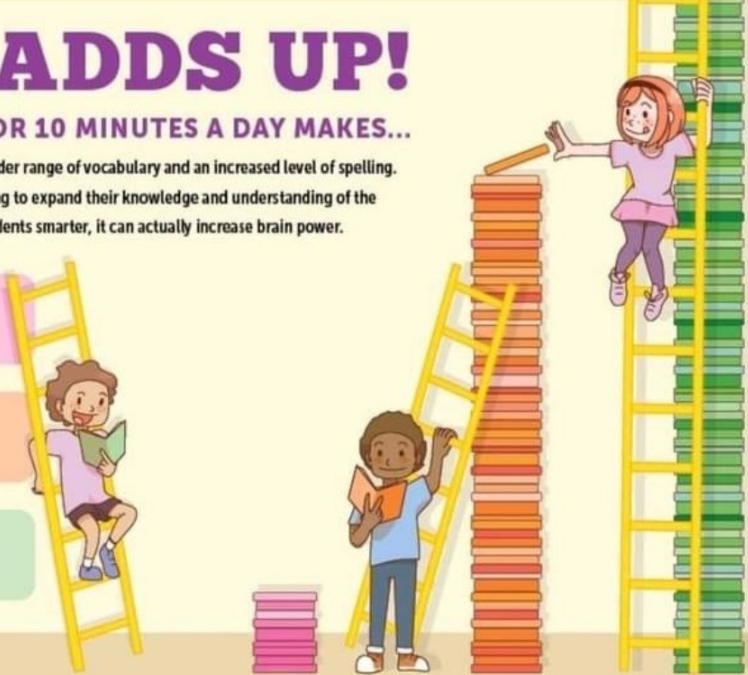
365 minutes in one year  
2555 minutes by year 6  
8000 words in one year!



3650 minutes in one year  
25,550 minutes by year 6  
600,000 words in one year!



7300 minutes in one year  
51,100 minutes by year 6  
1,800,000 words in one year!



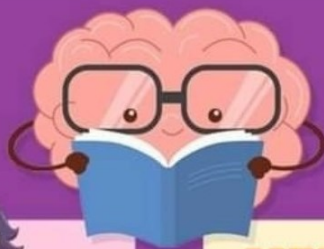
Adapted from Adams (2006) with baseline data from Anderson, Wilson, & Fielding (1998).

SCHOLASTIC



REMINDER that Premier's Reading Challenge sheets are due back by the 8th of September

## READING IS A WORKOUT FOR YOUR...



READ FOR AT LEAST 10 MINUTES EVERY DAY TO EXERCISE YOUR BRAIN



Reading is a positive habit that has life-long impacts on your knowledge and your health. It's like exercising or eating your vegetables!

### HEART

Research shows that reading about a characters thoughts and feelings make you kinder.



### MEMORY

Reading exercises the brain, improving your memory (maybe you'll stop forgetting your lunch at home!)



### IMAGINATION

Books can help you see vivid pictures in your mind so you feel like you're actually immersed in another time or place. The whole world comes alive as your reading journey continues through each page!



SCHOLASTIC

# KFPS Second Hand Pop Up Shop



## We are now accepting donations.



To help our families with the rising cost of living we are holding a pop up 2nd hand uniform shop on Wednesday of Week 10.



Drama Space



Wednesday 5th July 2023



8.30am - 9.30am & 2.30pm - 3.30pm



All items between \$2 & \$5

- Jackets
- Jumpers
- Polos
- Pants
- Shorts
- Skorts



We are accepting 2nd hand uniform items in good clean condition. If you have any items you haven't been able to sell and you would like to donate please send them to the front office.

- Jackets
- Jumpers
- Polos
- Pants
- Shorts
- Skorts
- Hats



All proceeds from the sale will go towards supporting future KFPS community projects

We thank you for your generosity and helping our school community

## EMERGENCY LUNCHES / RECESS PROVISIONS

Emergency lunches will no longer be provided by the canteen and a request for payment sent home. Any students who come to school without their lunch due to leaving it at home or financial pressures, will be provided with a sandwich from the front office. They will be given a lunch card by their teacher and asked to come to the staff room door where they will be provided with a sandwich. Class teachers have emergency recess provisions in their classrooms.

**We are committed that no child will go hungry at KFPS.**

## Fundraising with Drakes Supermarkets

An easy way to raise funds for Keithcot Farm Primary School is through the Drakes Supermarket "myDrakes" app.

For every \$2 spent at a participating Drakes store in SA, 1 cent will be credited to Keithcot Farm Primary School's Community Dollars fund.

Simply download the "myDrakes" app and select "Keithcot Farm School" as your Community Dollar partner. Every time you scan, a portion of your shopping total is automatically attributed to the school.

**It's that easy!**





# **WE CAN HARDLY RETAIN OURSELVES!**

The first section of our retaining wall project has been completed and it looks amazing! We are very excited to see this project roll through the school and have all the wooden retaining walls finally replaced with concrete .



## **Autism Lead Teacher - Jaye Turnbull**

**Autism** is a condition that affects how a person thinks, feels, interacts with others, and experiences their environment. It is a lifelong disability that starts when a person is born and stays with them into old age.

**The Autism Lead Teacher will:**

- provide support to their colleagues on how to best support and educate students with autism.
- drive improved practice relating to autism that works for the school.



## **Lunch Time Clubs**

**Chess Club**

**Sports Club**

**Craft Club**

**Giant Games Club**

**Lego Club (coming soon)**

**Plus more to be announced....**

## PREMIER'S BE ACTIVE & PREMIER'S READING CHALLENGES



### Active kids make better learners!

Physical activity is fun, and it can help with learning by improving your focus and promoting a positive attitude. Any type of physical activity is good, and 60 minutes a day is best.

### The Challenge

Do at least 60 minutes of physical activity on at least 5 days of the week for at least 4 weeks, record it, and you will be rewarded with a medal. Visit our website to learn more.

### Earn \$1000 for your school

You could earn a medal and win extra \$55 for your school. If a high percentage of students complete 10 weeks of the Challenge, you will be in the running to win \$1000.

[www.pbac.sa.edu.au](http://www.pbac.sa.edu.au)



Over 100 students have completed the challenge so far. They will all be receiving a medal in November. Forms due by the end of term 2.

Any queries please contact our Community Liaison Officer on [Alison.Nelson655@schools.sa.edu.au](mailto:Alison.Nelson655@schools.sa.edu.au)



Reading for the Challenge finishes on 8 September 2023

For more information visit the website, phone 08 8226 4300 or email [prc@sa.gov.au](mailto:prc@sa.gov.au)

[www.prc.sa.edu.au](http://www.prc.sa.edu.au)



Please return the completed sheet by the end of term 3 to receive a certificate / medal in November 2023.

Any queries please contact our Teacher Librarian Rosie Papageorgakis in the library.

Reminder that **BOOK WEEK** is **AUGUST 19th — FRIDAY 25th**

**Overdue letters have gone out, please check your child's bag.**

**ALL Children's University Passports are due to be handed up!**  
**ALL CU activities need supporting documents handed up to the front office to be verified and stamped as completed. ALL passports need to be handed up a minimum of twice a term for stamping with all verified entries listed from the portal.**

## New Daily Schedule

**Start Bell 8.55am**

- Lesson 1 - 9.00—9.50am
- Lesson 2 - 9.50—10.40am
- Lesson 3 - 10.40—11.30AM

*A fruit/ movement break will occur during the first 3 lessons*

**Lunch Eating - 11.30—11.40am**

**Lunch Play - 11.40—12.10pm**

Lesson 4 - 12.10—1pm

Lesson 5 - 1—1.50pm

**PM Recess - 1.50—2.10pm**

Lesson 6 - 2.10 - 3.00

**Dismissal - 3.05pm**

Last Day of each term is Early Dismissal at 2.05pm

## NEW ENROLMENTS AND SCHOOL TOURS AVAILABLE

If you have a child at Keithcot Farm Primary school and they have a younger sibling yet to start, please come in and see our front office staff to grab an enrolment form so they are enrolled and ready to start their learning journey at KFPS.

For those who wish to book a tour please contact our front office team on 8289 11 33 to arrange a time and date that is suitable. We would love to welcome you to Keithcot Farm Primary.

**Mid year intakes start from 2024.**



## Attendance Matters

Every student. Every day.

Minutes late per day	Learning time lost in a year
5 minutes	3½ days
10 minutes	7 days
15 minutes	10 ½ days
20 minutes	14 days
30 minutes	21 days



**The Rory's Parent Helpline number is: (08) 7084 1801.**

Just a quick reminder that all lunch orders can be placed via the QKR! App up to two weeks in advance, or even as late as up to 8.30am on the day you need the lunch order.

## VOLUNTEER



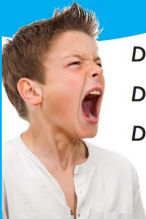
If you would like to volunteer at KFPS please make contact with our volunteer coordinator, Deb in the front office to discuss the role and how to obtain the required documents. **Ph: 8289 1133**



If your child requires medication to be administered at school. We must have a signed medication form and all medication must be stored in the first aid room. Please talk to Deb in the front office regarding medication for your child. If your child is unwell please keep them home to prevent the spread of illness.

# COMMUNITY NEWS BULLETIN

## WHO'S in CHARGE?



Does your child hurt or intimidate you?  
Do you feel you are losing control?  
Do you want to handle conflict better?



### Reclaim respect and calm in your family

The *Who's in Charge?* group is an 8 week program for parents or carers of young people (8-18) who are beyond control, violent or defiant.

This is a **FREE** program

The group aims to:

- Provide a supportive environment to share experiences and ideas
- Reduce the guilt and shame that parents feel
- Offer ideas to help you develop individual strategies for managing your child's behaviour
- Help in understanding power in relationships and coping with stress
- Explore ways of increasing safety and well-being

Next group: Thursday's commencing 3 August 2023 for 8 weeks, 9:30am to 12pm

Where: The Parks Library, Community Room 1, 46 Trafford Street, Angle Park

For any queries or referrals please call Trevor: 0410 698 907 or Centacare: 8215 6700

An initiative of Reconnect, City of Port Adelaide Enfield and Centacare Catholic Family Services



### Did you know?

In 1989 GGHS opened with 140 students in Years 8 & 9. In 2023 it is 30 years since the first group of Year 8s at GGHS graduated in 1993, and 31 years since the first ever senior class graduated, in 1992.

**It's time** to facilitate reunions for past students from 10, 20 & 30/31 years ago. **It's time** to invite all former students to indicate their level of interest in reconnecting, finding old classmates and establishing an Old Scholars Association.

**It's time** to get excited, get organised and get in touch!

Please complete contact details and level of interest on the following

link: <https://forms.office.com/r/KfxU7JJHC4>

or scan the QR code



We are planning a 'Welcome back to GGHS' event in Term 3 for the classes of 2013, 2003 & 1992/93 and are keen to collect school memorabilia & contact details for these former classmates asap

Please contact [jenny.christie95@schools.sa.edu.au](mailto:jenny.christie95@schools.sa.edu.au) for further information

Respect • Equality • Pride • Integrity • Resilience

Success for All



Your child's dental health is important to their overall health and wellbeing.

All children from 0-18 years are welcome to attend SA Dental. There are no out-of-pocket costs for most families. Book an appointment today!

To find your closest SA Dental clinic, visit [www.dental.sa.gov.au/find-a-clinic](http://www.dental.sa.gov.au/find-a-clinic)

To request an appointment, visit [www.dental.sa.gov.au/kids/request-an-appointment](http://www.dental.sa.gov.au/kids/request-an-appointment)



## IMPORTANT DATES

### TERM 2

2nd Hand Uniform  
Pop Up Shop in House 3  
Wednesday 5th July  
8.30am - 9.30am  
2.30pm - 3.30pm

Final Day of Term 2  
7th July 2023  
Early Dismissal 2.05pm

---

Pupil Free Day  
Monday July 24th

Term 3 Starts  
Tuesday 25th July 2023

Pupil Free and School Closure  
Days for 2023

Monday July 24th (PFD)  
Monday Sept 4th (SCD)  
Friday Nov 3rd (PFD)

Absentee SMS:

0408 482 972

SMS your child's name and the  
reason for their absence.

(Reason can be family/illness etc.)



Find us on  
**Facebook**

#### KEITHCOT FARM PS COMMUNITY PAGE

A closed group for parents to communicate and connect with the school & other parents & caregivers. Stay up to date with news, events and information for the whole school.

#### KEITHCOT FARM PRIMARY SCHOOL PAGE

This public page is for the broader community, family and friends, old scholars to see what we get up to at KFPS.

#### KEITHCOT FARM PRIMARY SCHOOL 2ND HAND UNIFORM 2ND HAND GROUP

This is a public group for all posts regarding 2nd hand uniform only.

#### KEITHCOT FARM PS SPECIAL NEEDS SUPPORT GROUP

This closed group is a support page for parents and caregivers of KFPS Special Needs Students.

### Keithcot King's OSHC

We service the Keithcot Farm and King's Baptist schools for before and after school care and vacation care programs.

PH: 8289 2649

Mobile : 0401 121 583

Email: [oshc.keithcot2@schools.sa.edu.au](mailto:oshc.keithcot2@schools.sa.edu.au)

[www.keithcotkingsoshc.com](http://www.keithcotkingsoshc.com)

### SCHOOL LOCKER UNIFORM SHOP

8.15am - 10.15am

Tuesdays Only

Any queries email the team on  
[keithcotps@theschoollocker.com.au](mailto:keithcotps@theschoollocker.com.au)

Orders can be placed by

[https://theschoollocker.com.au/  
schools/keithcot-farm-primary-  
school/uniforms](https://theschoollocker.com.au/schools/keithcot-farm-primary-school/uniforms)